

1798 Ebenezer Nightingale - entire block between Power & Cox  
Moses nephew - agent in New York

PROVIDENCE PRESERVATION SOCIETY

1861 ) on 24 Feb 1861  
did occupy & by Moses nephew  
Records of Ebenezer Nightingale  
#247 SOUTH MAIN STREET...Brick  
Flat 16  
Lot 29

see \*

1811 George C Nightingale et al sell for \$4000 to Benjamin Clifford and Samuel P Allin, merchants, 1 lot and wharf (as they adjoin each other) Bounded: E by Main Street 73'; S by wall of the store of the heirs of John Innes Clarke to the Channel of the River; W by the Channel; N by a gangway...DB 35.189

\* 1814

1825 PARTITION: Estate of Samuel Allin. "Benjamin Clifford vs Hannah Allen et al." Bounded: E/ly on Main Street and extending S/ly 73' to center of partition wall of a store (formerly belonging to heirs of the late John Innes Clarke) with the N/ly part of said partition wall. S/ly on said store and land, and extending to Channel of River; W/ly on said Channel and N/ly on gangway extending to Main Street to first mentioned corner:...

"We set off to Benjamin Clifford his full moiety, the remaining part after Hannah)...beginning at a point in the center of the partition wall between the FRONT SOUTH and MIDDLE STORES and about 21' from the S/E corner of said Estate and running W/ly through the center of the partition wall about 40' to the STONE STORE herein set off to heirs of Samuel P Allin. Thence turning and running N/ly by said Store about 4' and 7' by the back wall of the MIDDLE STORE to a point 7' N of said STONE STORE. Thence turning and running W/ly about 48' to a point on a line with the W end of said STONE STORE, and 7' from the N/W corner of the same. Thence turning and running N/ly on a line with said W end of said STONE STORE about 42' to the gangway, thence turning and running E/ly by said gangway 88' to the W line of Main Street, thence on said Street 53' to the first mentioned corner"...DB 51.195

1836 Benjamin Clifford sells for \$7000 to Ebenezer Wade, a certain lot of land with the Brick and Stone Stores and other improvements, being part of the portion of the Estate formerly owned by me and Samuel N Allen, deceased, which was set off to me in the division of the estate in 1825...DB 68.153

1837 FIRE RECORD: Eben Wade...W side South Main Street...Brick and stone with brick partition walls, floors laid in mortar..roof plaistered on the inside. ...about 74' in front and about 40' from front to rear.. 3 stories high in front and 4 in rear...occupied for a DWELLING HOUSE Volume 16...#6992 (This policy includes THREE units of which #247 South Main Street is the Northmost)

1843 Eben Wade gives to Moses Wood "all my right, title to a certain lot of land with THREE Brick DWELLING HOUSES on the W/ly side of South Main Street bounded: E by South Main Street 74'; S by Eben Wade (formerly Wm Comstock and Joseph S Cooke 88'); W by Channel 74'; N by gangway 88'. DB 85.261 (Powerst)

\*

\*

more...

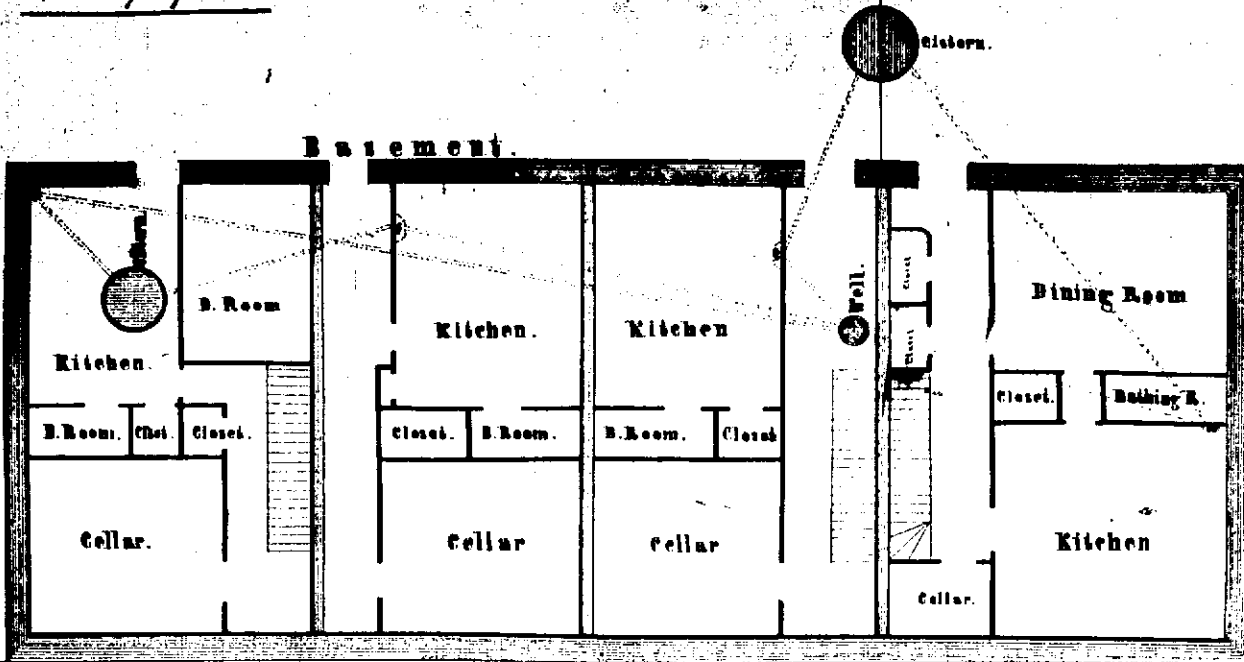
## #247 South Main Street...continued

- 1843 Moses Wood sells for \$5300 to Thomas M Burgess a certain lot of land with Dwelling House bounded E by South Main Street 29 $\frac{1}{2}$ '; S by Daniel Bush 88'; W by 12' gangway 29 $\frac{1}{2}$ '; N by gangway (Power St) 88' being the Northmost of three houses and lots conveyed to me by Eben Wade in 1843 ...85.312
- 1843 Thomas M Burgess, trustee of Sarah <sup>G</sup> Wade, under direction of Moses Wood sells for \$6000 to Amey G Dorrance the above property, the gang way to be kept open and with well privileges...DB 85.323
- 1873 WILL: Amey G Dorrance leaves in trust all her real estate for the benefit of her daughter Mary W D Mauran...Wills 24.207
- 1910 James L Jenks, trustee u/w Amey G Dorrance sells for \$4600 to Max Levin a certain lot of land with dwelling house bounded: E by South Main St 29'; S by grantee 94'; W by George L Claflin 29'; N by Power Street 94'...DB 515.267
- 1915 Property was taxed to Samuel Grossman
- 1926 Taxed to Charles Z Alexander
- 1953 " " Charles Z and Marion S Alexander

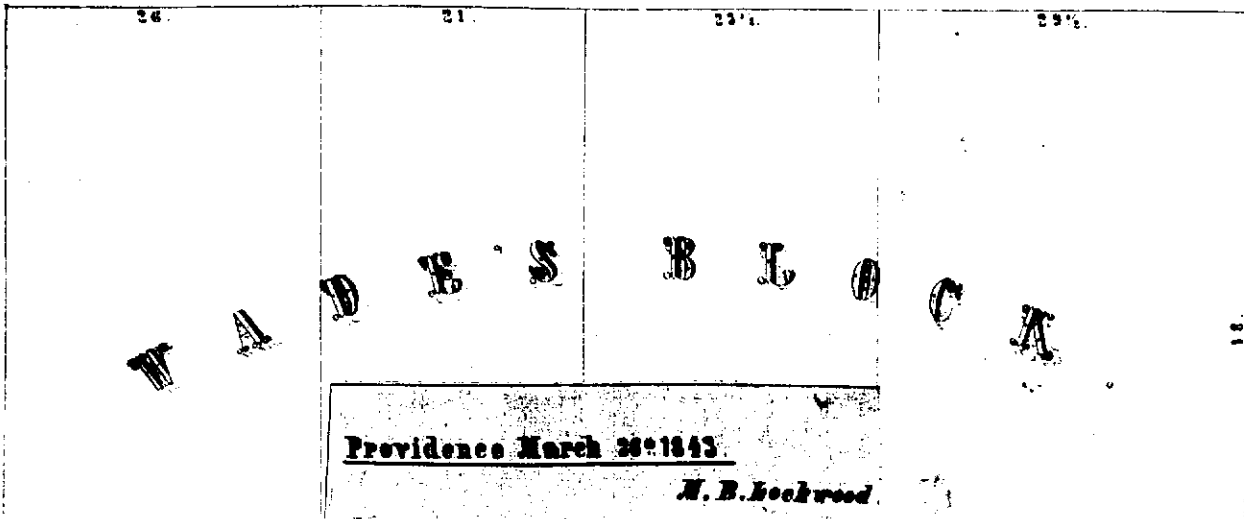
See notes:

"SOUTH MAIN STREET...West Side...POWER to GOLD STREET"

Scale 10 feet per inch

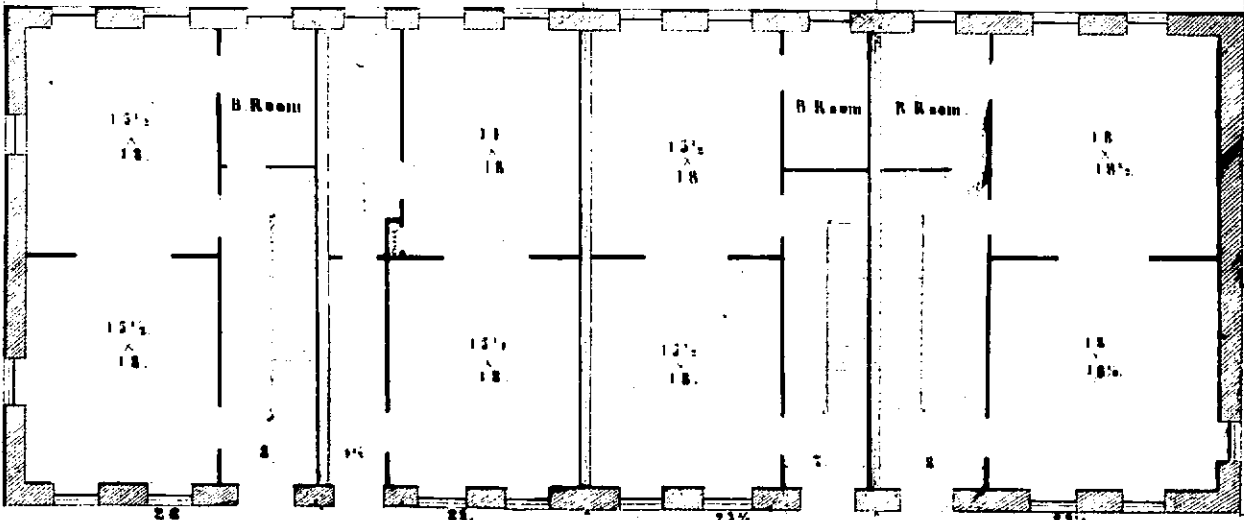


Gang-way.



GANG-WAY

Old Street



South Main St.

GANG-WAY Power Street

PROVIDENCE PRESERVATION SOCIETY

NOTES on

SOUTH MAIN STREET...West Side

POWER STREET to GOLD STREET

(Nos 247 to 259 inclusive )

The numbers in this Block changed in 1847 and again in 1867

South part built between 1801 and 1811 (see boards in deed records following)  
North part (Allen and Clifford) built between 1811 and 1825.

